



Design

PACKAGING DEVELOPMENT & MOULDS SERVICES

Index

- 01 Find out **who we are**
- 02 Our **onboarding** process
- 03 Discover our **services**
- 04 Enjoy our **stories**
- 05 Our references & **contacts**

***“Design success is achieved when
simplicity, functionality and beauty
seamlessly blend to create
an unforgettable experience.”***

PACKAGING DESIGN DEVELOPMENT

Our design work-flow.



FIND OUT WHO **WE** ARE



We

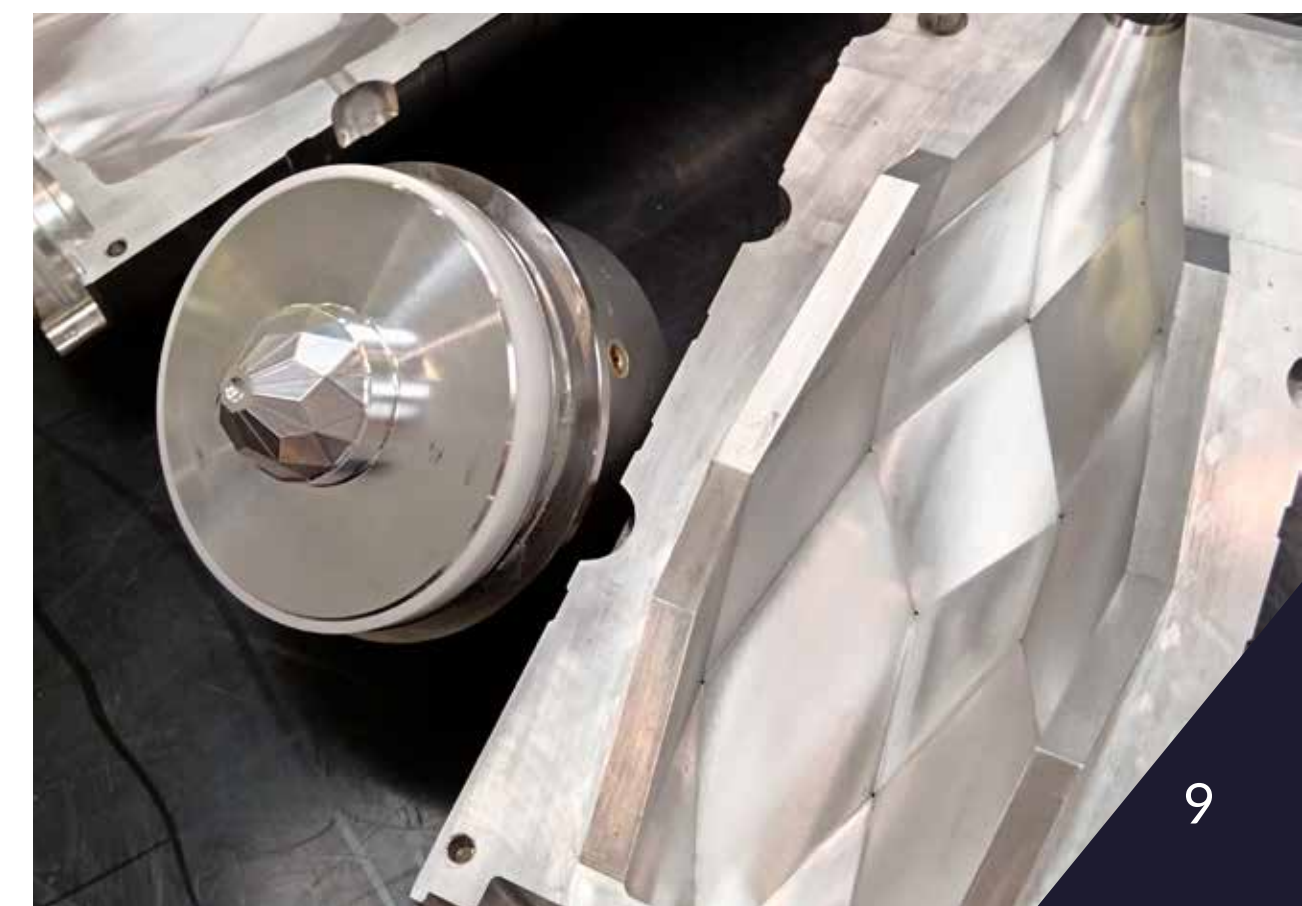
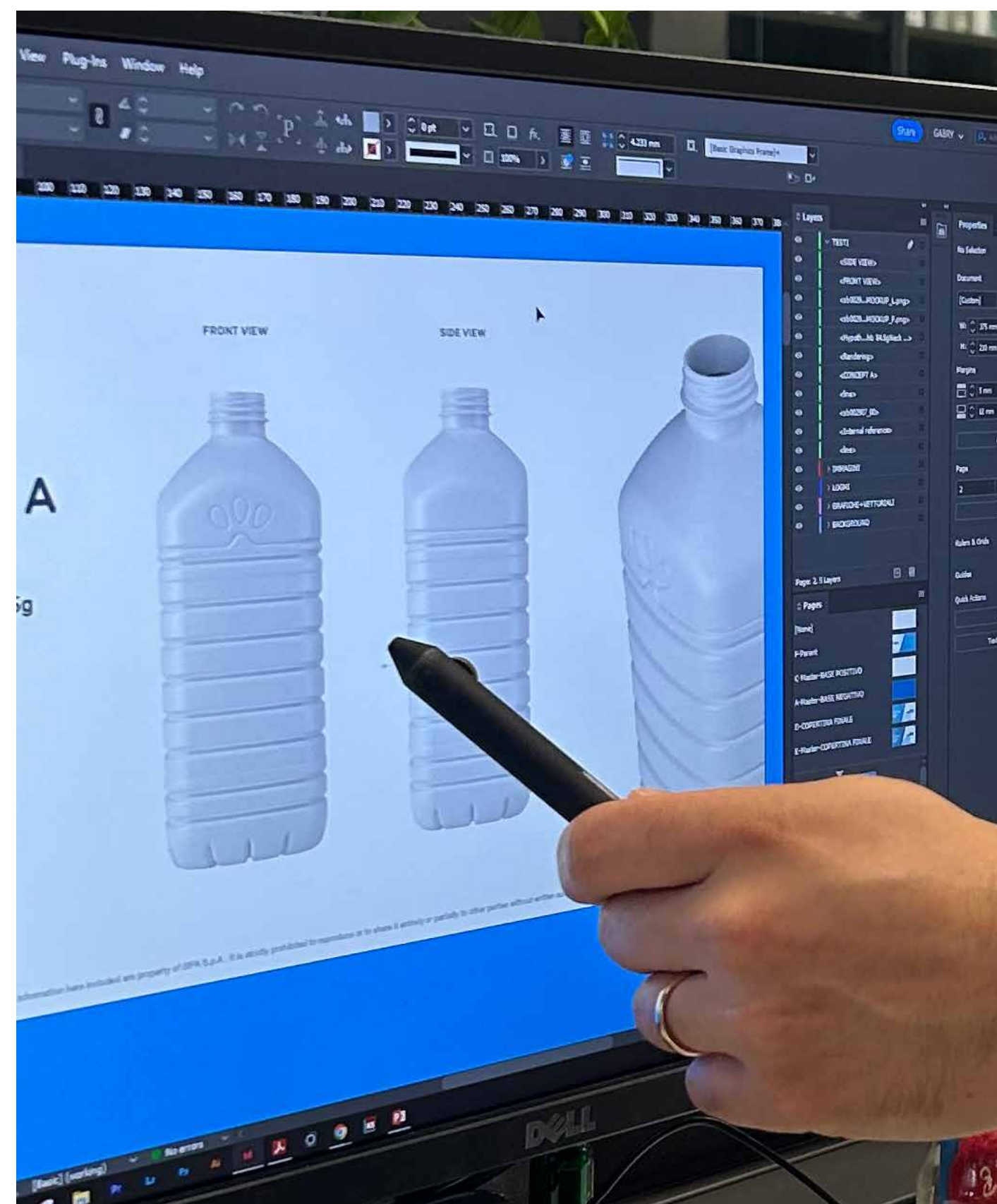
are **SIPA DESIGN.**

SIPA DESIGN is **a creative agency** dedicated to developing **packaging solutions** for our global clients. Our industry-leading expertise provides insights into design, sustainability, materials, production challenges, and e-commerce. Our ultimate goal is to **deliver elegant designs** that resonate with your brand's core values.

OUR **ONBOARDING** PROCESS

On boarding process.





DISCOVER OUR **SERVICES**



Packaging Design.

Concept ideation is a **methodology**. Generating multiple concepts, refining them through feedback and iteration is essential. Embracing this approach allows for continuous **improvement, exploration** of different perspectives, and the **development** of more refined and innovative concepts.



02

Visual Identity.

Valuable branding requires staying **relevant** and adapting to changing customer needs and market trends. Brands that foster a culture of innovation, embrace **new technologies**, and continuously improve their offerings and experiences are more likely to succeed in the **long term**.



Elàn 03

Elàn

Elàn

Brand&Logo Design.

Strong branding goes **beyond a logo**; it encompasses a company's values, tone of voice, and overall visual identity. Building a new brand means **crafting** a unique customer **experience** and empowering all of a company's products and services.

04

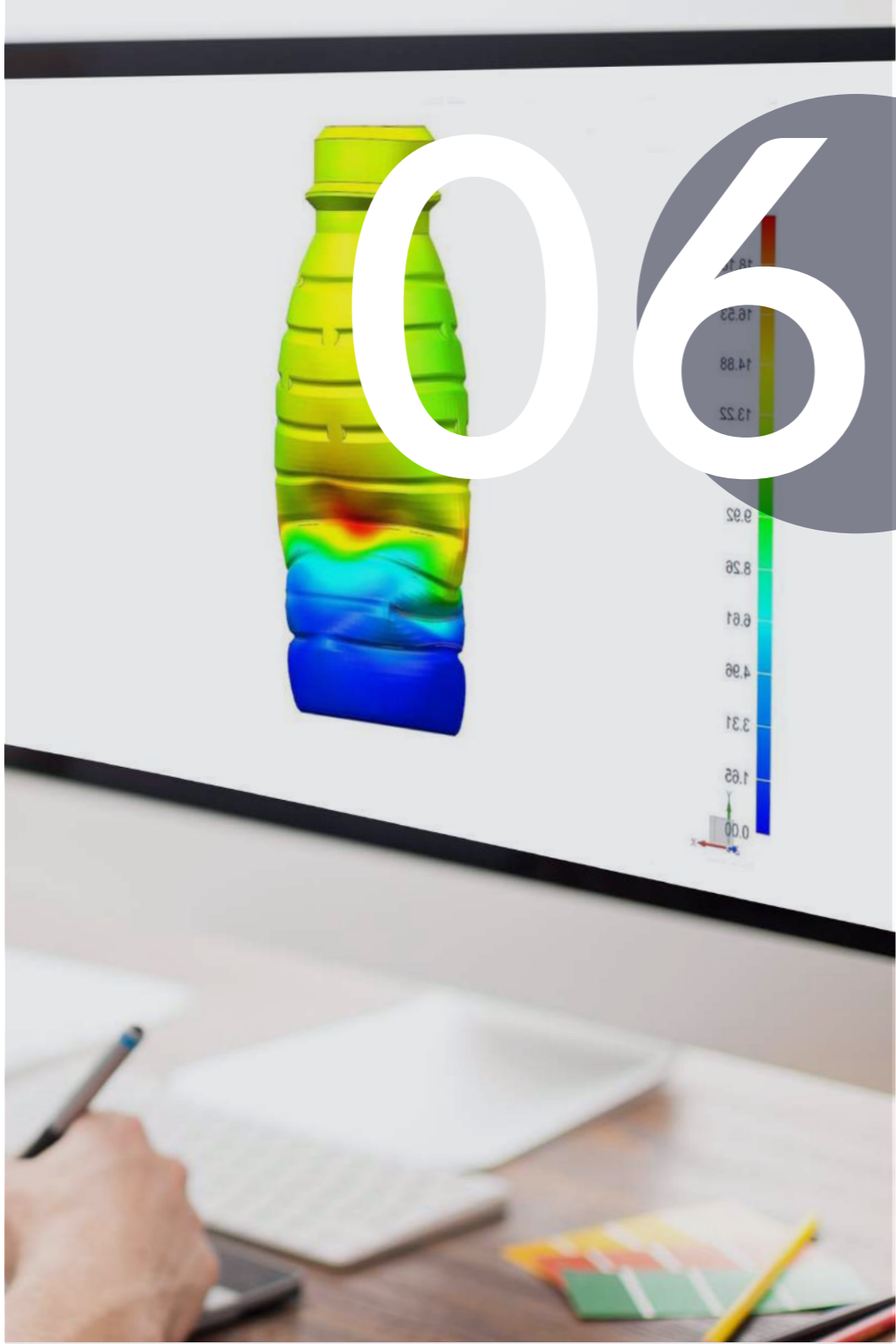
Label Development.

Label design comprises several key elements that work together to **communicate** information, **attract** attention, and enhance overall **visual appeal**. We design with brand loyalty in mind, setting trends because we believe that “the label is the dress of the product” and deserves **careful consideration**.

05

Packaging Engineering.

Great packaging design considers **functionality** and **practicality**, protecting the product, facilitating ease of use, and providing a **positive consumer experience**. It offers convenience, durability, and efficiency in production, handling, and transport.



Virtual Prototyping.

Creating a virtual prototype allows designers to simulate the actual user experience, identify potential issues or challenges, and **validate design decisions** before final production. This approach offers significant advantages, including increased speed, reduced costs, and mitigated risks.

07

3D printing.

The most important value of mockups (whether 3D printed, SLA, or fully interactive blown) is “Tangible Visualization.” These mockups allow designers and stakeholders to **physically interact** with and visualize a product or concept in a **tangible form** providing **a realistic representation** of it.



08

Rapid prototyping/3D printing blow moulds.

We enabled **Rapid Prototyping using 3D printing technology** to produce blow mold solutions using high-quality resin to deliver fast, accurate prototypes, accelerating validation and time to production.

09

Injection & Blowing prototyping.

The power of comprehensive prototyping resides in its ability to **foster iterative enhancement**, empowering designers and developers to produce superior products, refine user experiences, and mitigate the risks and uncertainties inherent in final production by **furnishing a true-to-life** depiction of the design.



10

Complete Laboratory Tests.

Our dedicated Quality Lab performs a **full spectrum of analytical tests** on preforms and containers. This includes precise dimensional and mechanical checks, physico-chemical analysis, and vital **gas barrier property testing**. We ensure every packaging solution is rigorously **validated, robust, and compliant** with all global performance and safety standards.



Tooling Manufacturing.

Our integrated **Tooling Manufacturing** center produces **high-precision molds** for injection and stretch-blow molding. Utilizing specialized expertise and advanced CNC technology, we ensure superior mold quality and maximum reliability. This in-house control guarantees perfect machine integration and the fastest possible **Time-to-Market** for all new container designs.

WHAT CAN WE **OFFER**



What can we offer.

Our portfolio includes:




Blow molds for Linear machines

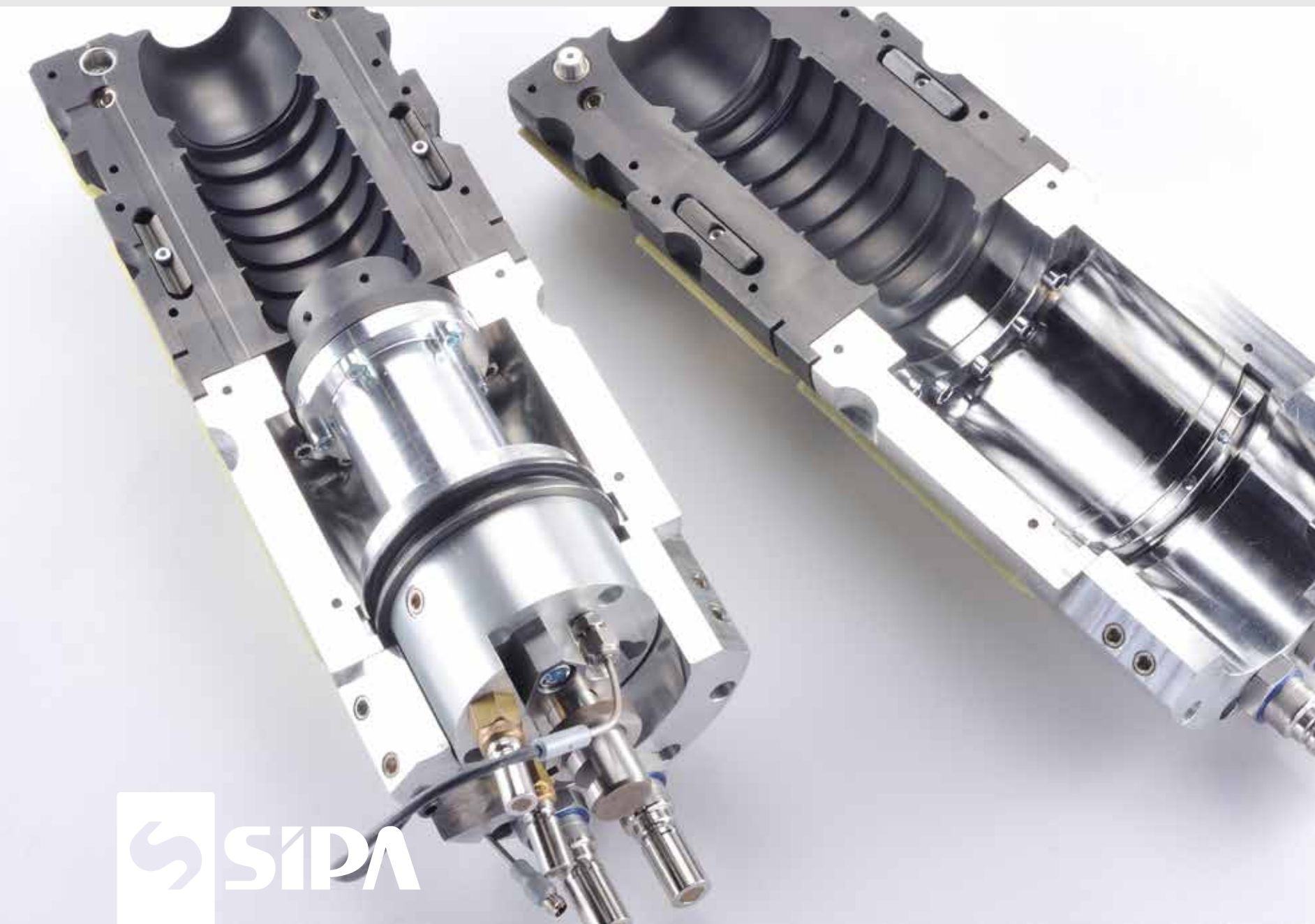
Blow molds for Rotary machines

Quick-change molds for Rotary machines

Conversion kits for Quick-change molds for non-upgraded platforms.

BLOW MOLDS FOR ALL PLATFORMS

MACHINE TYPE	PICTURE	SIPA PLATFORM	OTHERS	BOTTLE'S TYPE
<p>ROTARY MACHINES</p>		<ul style="list-style-type: none"> ●SFR ●XTRA 	<ul style="list-style-type: none"> ●NOT SIPA PLATFORMS* <p>Mold reverse-engineering is required.</p>	<p>FROM 10cc TO 3.5L*</p> <p>Specific technical details require verifying the machine specifications.</p>
<p>LINEAR MACHINES</p>		<ul style="list-style-type: none"> ●SFL 	<ul style="list-style-type: none"> ●NOT SIPA PLATFORMS* <p>Mold reverse-engineering is required.</p>	<p>FROM 10cc TO 30L*</p> <p>Specific technical details require verifying the machine specifications.</p>
<p>SINGLE STAGE MACHINES</p>		<ul style="list-style-type: none"> ●ECS SP ●ECS FX 		<p>FROM 10cc TO 3L*</p> <p>Specific technical details require verifying the machine specifications.</p>



ENJOY OUR **STORIES**

BELLA

PREMIUM WATER

“Bella” means “**beautiful**” in Italian.

This naming embodies the “**Made in Italy**” creativity.

Inspired by the beauty and elegant shapes of seashells, particularly the sea **oyster** that cradles a precious **pearl**, its fluid lines evoke a sensual and **sophisticated feeling**, lending the bottle a precious and elegant appearance.



*Everything has been designed following the market **trends of luxury**.
High end appeal was the target that of the concept design.*

BELLA

Volume: **500ml**

Weight: **25g**

Neck finish: **PCO Corvaglia**

Base: **Flat**

Application: **Still water**

Label: **Self Adhesive Label**

FRONT VIEW

SIDE VIEW



Ø66



OASIS

WATER

This cool, youthful bottle design, with its layered texture, evokes **the trunk of a palm tree**, ensuring both **recognizability** and **ergonomic** functionality. Inspired by the desert landscape, the wavy sand patterns, reminiscent of the sea, create a harmonious and personalized contrast between two opposing elements.



The texture of the sand of the Arabian desert, which also recalls the waves of the sea.
Dynamic, elegant and personalized.

OASIS

Volume: **500ml**

Weight: **9g**

Neck finish: 29/25

Base: **Flat**

Application: **Still water**

FRONT VIEW

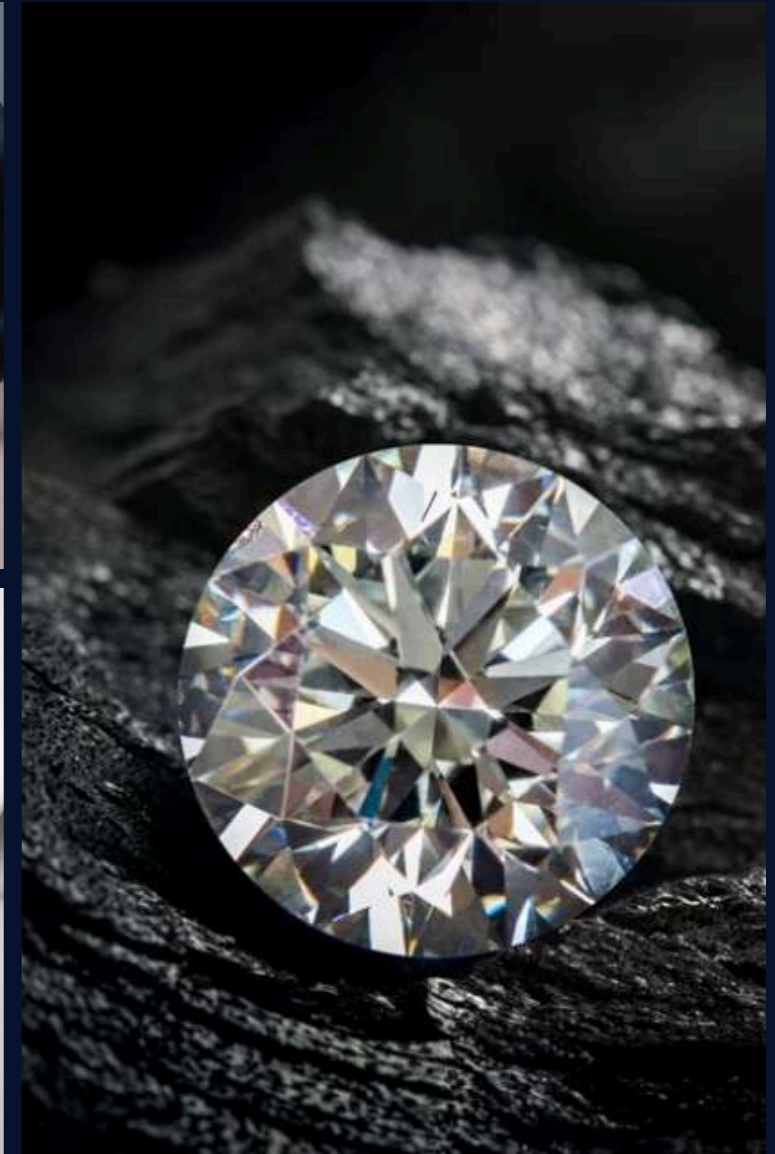
SIDE VIEW



GEMMA

PERFUME

An elegant, geometric, and **luxurious perfume** container, resembling a gem, is adorned with a silver label evocative of the distinctive facets of a diamond. Inspired by the **simplicity** of rounded shapes, like petals and precious gems, the design is **clean and minimal**.



An harmonic mini size design with symmetrical debossed details that transmit

*preciousness. The shape make the design **timeless and classy.***

GEMMA

Volume: 50ml

Weight: 20g

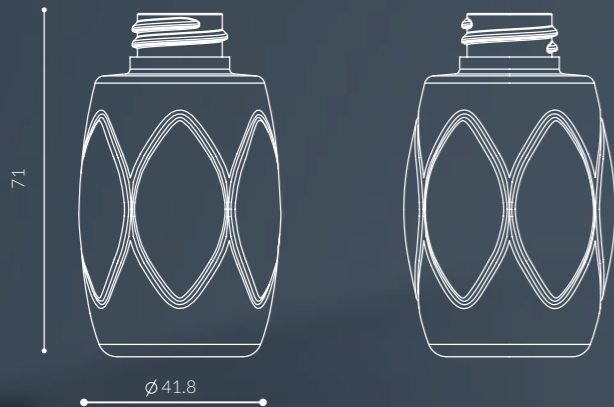
Neck finish: 20mm

Base: Flat

Application: **Perfume**

FRONT VIEW

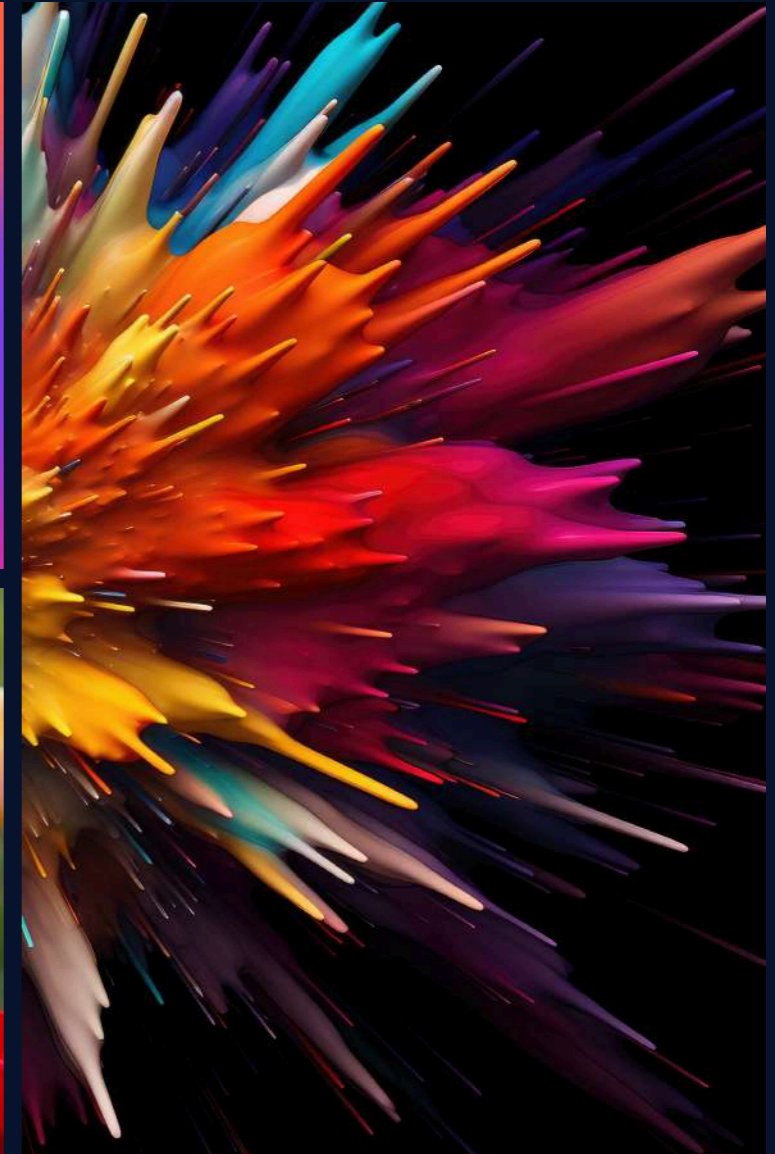
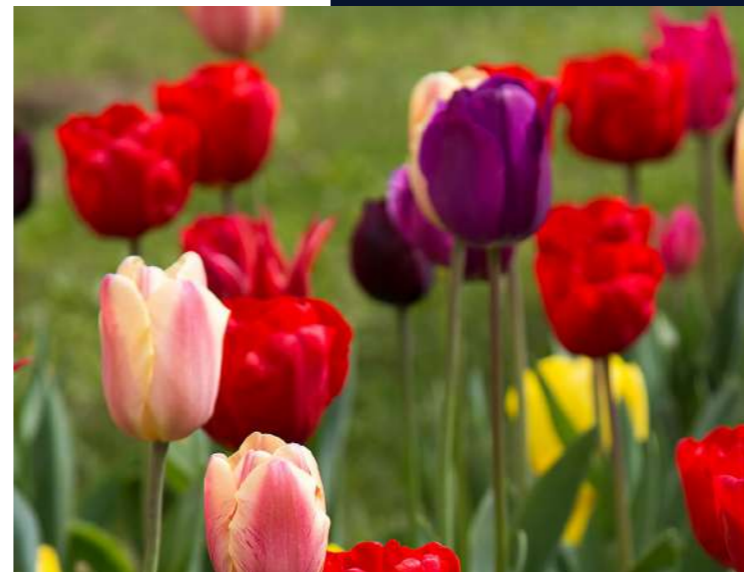
SIDE VIEW



SHADE

PERFUME

A **vibrant** and personalized fragrance for both men and women, instantly evoking **summer vibes** and **freshness**. The concept's name is inspired by the wide array of available colors. Different levels of bottle transparency can be offered, depending on the fragrance's **intensity**.



An harmonic mini size design with symmetrical debossed details that transmit

*preciousness. The shape make the design **timeless and classy.***

SHADE

Volume: 50ml

Weight: 20g

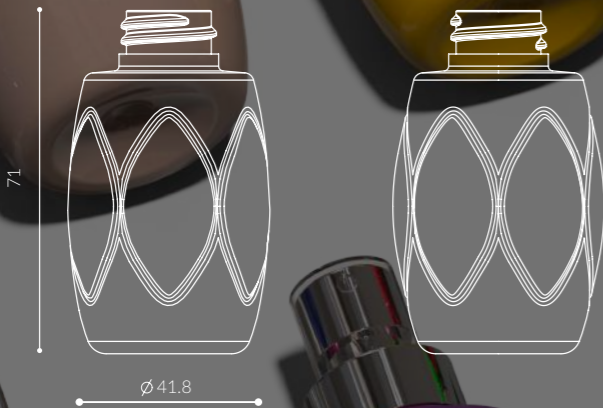
Neck finish: 20mm

Base: Flat

Application: **Perfume**

FRONT VIEW

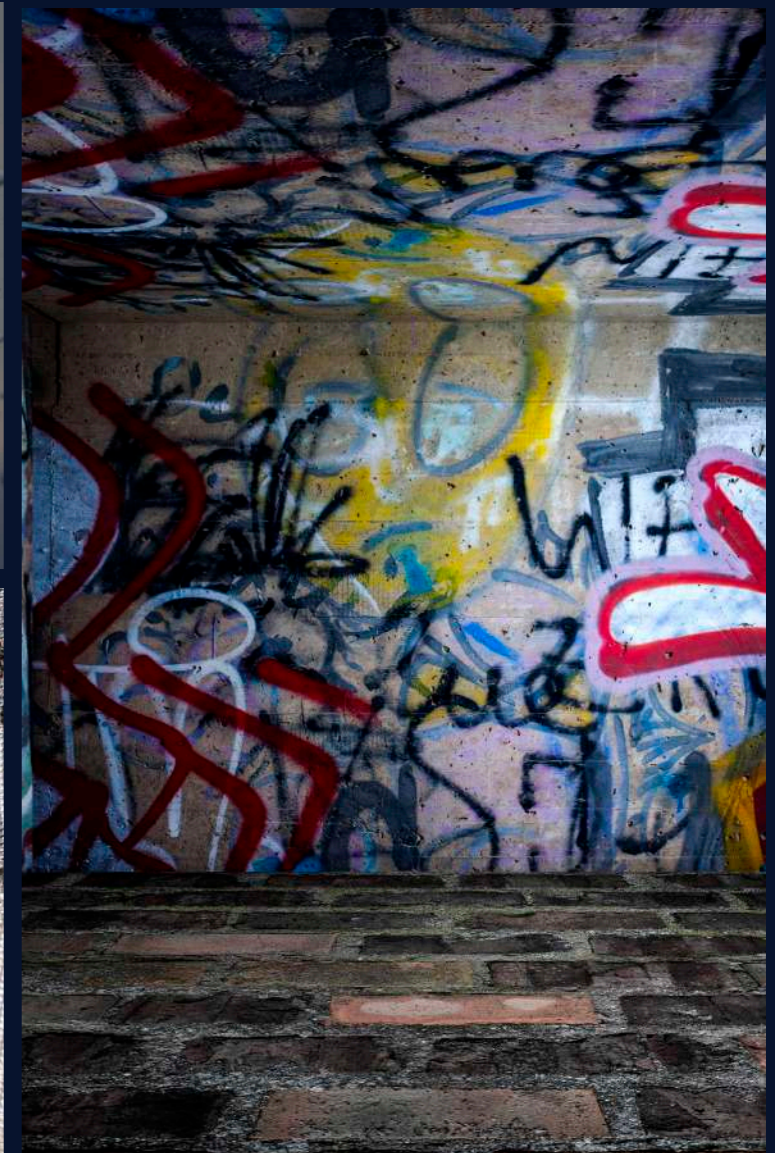
SIDE VIEW



GLOW

PERFUME

A “**talking**” **eco-friendly** bottle, in line with current **label-free** and **tactile trends**, makes a significant impact on the shelf thanks to its embossed messaging. Labels and packaging that utilize these printing techniques consistently **elevate the perceived value** of the product.



A premium look that is associated with **high-end** brands, appealing to **more senses** than just sight.

GLOW

Volume: 500ml

Weight: 34g

Neck finish: 24mm

Base: Flat

Application: Shampoo



SIESTA

CERVEZA

Hand-drawn graphics are a key 2023 label trend, resonating with consumers seeking **authenticity**. Siesta's designs, for example, evoke Mexico's diverse **landscapes** and stunning **sunsets**. Self-adhesive labels enhance transparency and perceived product quality.



*Dedicated to the famous **Siesta moment**, inspired by **sunset***

***relaxation** and Mexican panoramas.*

SIESTA

Volume: **330ml**

Weight: **25g**

Neck finish: **26mm crown**

Base: **Champagne**

Application: **Beer/premixed**

FRONT VIEW

SIDE VIEW



DELICIOSA

CERVEZA

Hand-drawn graphics are a key 2023 label trend, resonating with consumers seeking **authenticity**. Siesta's designs, for example, evoke Mexico's diverse **landscapes** and stunning **sunsets**. Self-adhesive labels enhance transparency and perceived product quality.



Dedicated to the famous **Siesta moment**, inspired by **sunset**

relaxation and Mexican panoramas.

DELICIOSA

Volume: 330ml

Weight: 25g

Neck finish: 26mm crown

Base: Champagne

Application: Beer/premixed

FRONT VIEW



SIDE VIEW



SQUEEZY

TOMATO SAUCE

The **ergonomic** shape and **squeezable** container, with special flat panels designed for hot filling without deformation, reliably prevent the label from peeling. The design provides a comfortable, **easy-grip zone** while maintaining a premium, **eye-catching aesthetic**.



Its **minimal but elegant** details (the spokes and facets of this oval shape) make the difference in the consumer's **perception of value**.

SQUEEZY

Volume: 400ml

Weight: 28g

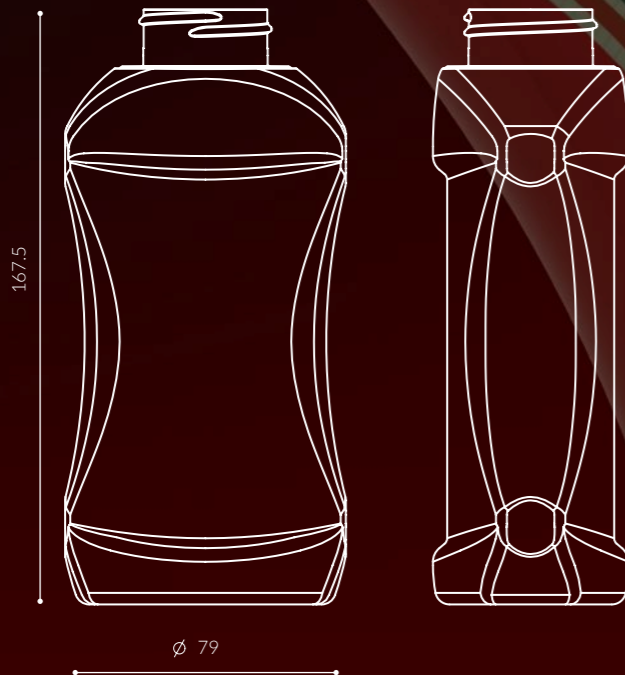
Neck finish: 38mm HF

Base: Flat

Application: Ketchup

FRONT VIEW

SIDE VIEW



GOLD LEAF

OLIVE OIL

A **premium glass-like** 250ml bottle, with an elegant and outstanding design to contain high-quality **extra virgin olive oil**, inspired by the purest Greek Oils. This bottle is adorned by a **refined and elegant label** that reflects the purity and simplicity of the oil - with soft gold details and pearl white background.



Precious minimalistic details inspired by ancient greek gold jewelry and dedicated to the world's famous green refined cousin.

SQUEEZY

Volume: 240ml

Weight: 45g

Neck finish: 28mm

Base: Flat

Application: Edible oil

FRONT VIEW

SIDE VIEW



THE HILLS

SPARKLING WINE

La Spumante is the first **PET bottle** in the world **for sparkling wine**. It has a very recognizable glass-like body design, that immediately **suggest the quality** of the product. The bottle has a typical “Collio” shape that is designed to withstand internal pressure and to host a precious stick label with golden details, **to elevate the product**.



The final touch of the metallic cage and aluminum capsule over the cap complete

*the **premium look** of this **innovative bottle**.*

HILLS

Volume: 750ml

Weight: 90g

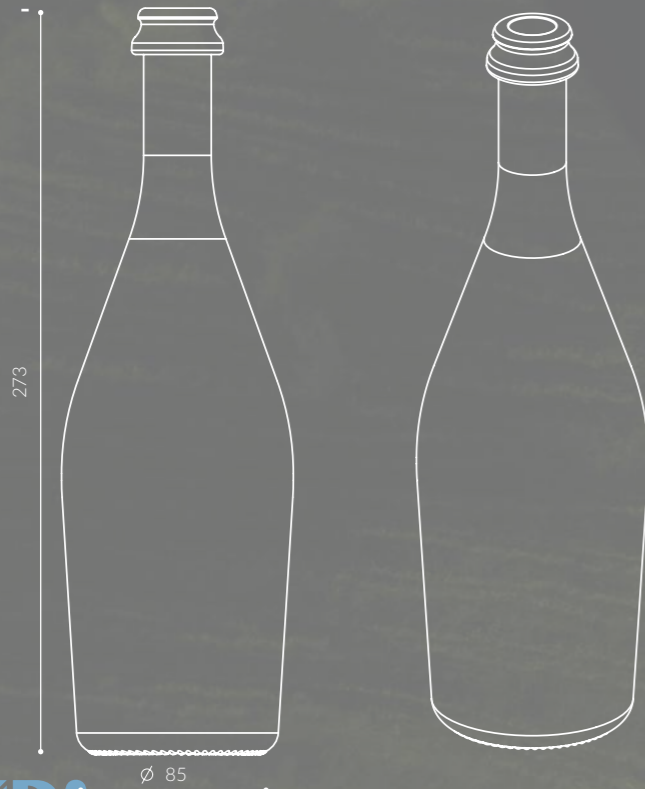
Neck finish: **Crown neck**

Base: **Champagne**

Application: **Sparkling wine**

FRONT VIEW

3D VIEW



VISIT OUR WEBSITE
WWW.SIPASOLUTIONS.COM

by **Zoppas Industries**

Europe

SIPA S.p.a. HQ
Via Caduti del Lavoro 3, 31029 - North Italy
Vittorio Veneto TV - ITALY
Mail: packaging@sipa.it

USA

PTI Packaging Design Development
1440 Timberwolf Drive - North America
Holland, OH 43528 - USA
mail: info@pti-usa.com

China

SIPA MACHINERY JIAXING CO. LTD
No.501,Chenggong Road,Chengnan Street Na
JIAXING - CHINA
mail: smj@zoppas.com