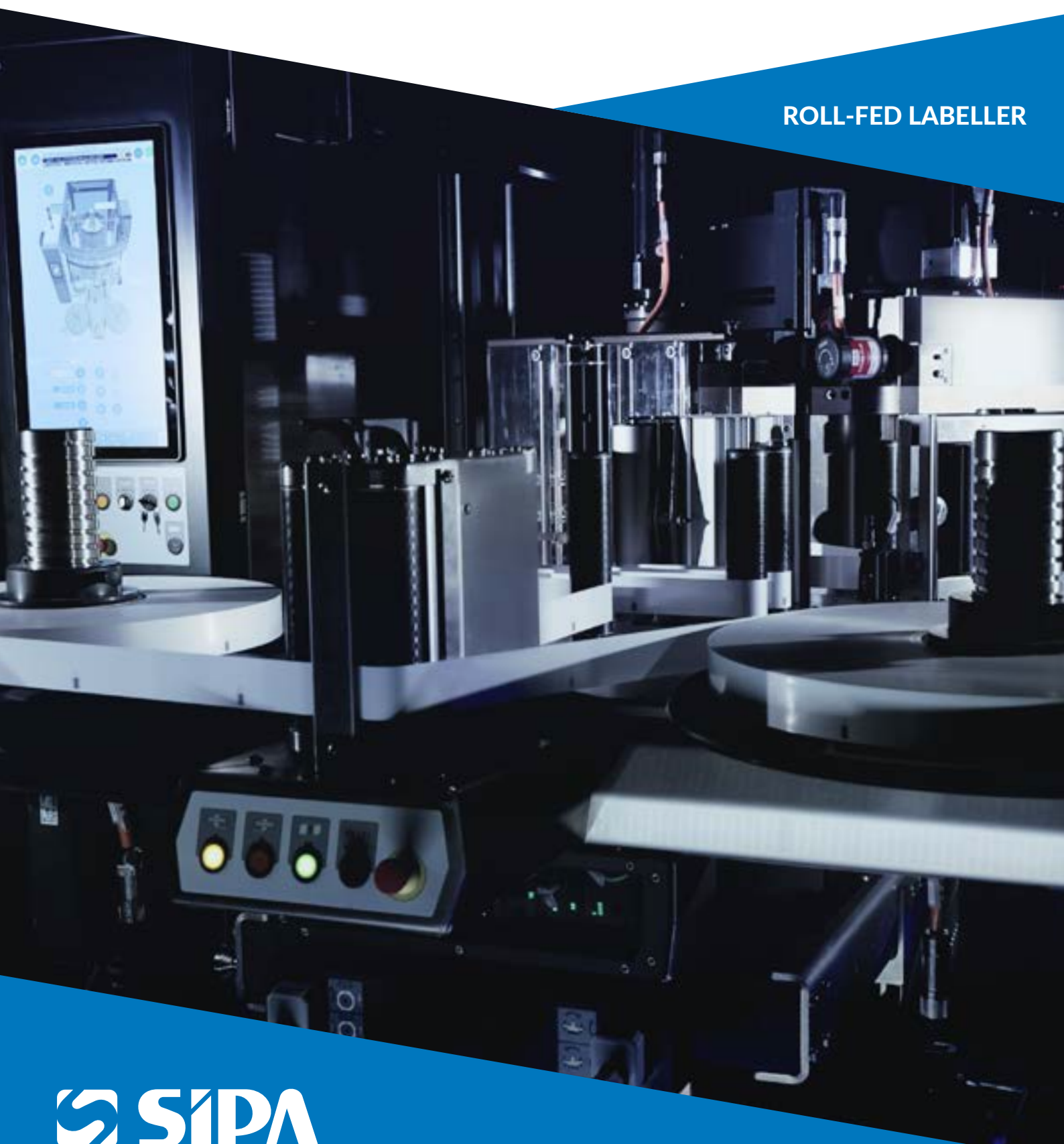


XLABL RF

ROLL-FED LABELLER



XLABL RF

UNMATCHED ACCURACY AND FLEXIBILITY IN LABELLING

The XLABL_RF is a rotary roll-fed labeller, designed to apply plastic wrap-around labels with hot-melt glue to cylindrical and shaped PET bottles, whether full or empty. It is engineered to perform with unparalleled accuracy, even at varying production speeds. Its flexibility makes it suitable for diverse applications in industries ranging from beverages to personal care, all while ensuring exceptional **cost-efficiency** and **sustainability**. The machine's range covers a full spectrum of output, from low to high speed, while ensuring exceptionally accurate container decoration.

STAND-ALONE MACHINE RANGE

XLABL_RF			
Diameter	N. Of heads	Output*	Labelling stations
720 mm	From 9 to 18	Up to 36.000 bph	1
960 mm	From 20 to 26	Up to 48.000 bph	1
1200 mm	From 26 to 34	Up to 56.000 bph	1
1440 mm	From 32 to 40	Up to 64.000 bph	2

Our labelling unit is designed for **unparalleled operator accessibility**, ensuring effortless production changeovers and simplified maintenance. This is achieved through external vertically sliding safety guards and a smart sliding system for labelling station elements, to optimize accessibility while **minimizing the machine's footprint**.

An innovative user-friendly, **21,5" touchscreen operator panel** with portrait orientation, built on web technologies, designed to significantly streamline operator workflows and easily set the main parameters of the machine.



FLEXIBILITY

Highly flexibility in handling a wide range of labels, with varying qualities and thicknesses



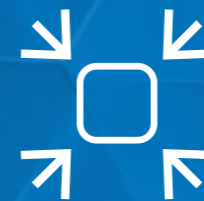
PERFORMANCES

Unmatched labelling efficiency, speed and precision, powered by seamless brushless motion technology



COST-EFFECTIVENESS

Reduced operating costs thanks to efficiency and waste minimization



FOOTPRINT

Compact and ergonomic design with easy operator access, reducing shipment costs and installation time.



HYGIENE

Hygienic design with easy cleaning of surfaces



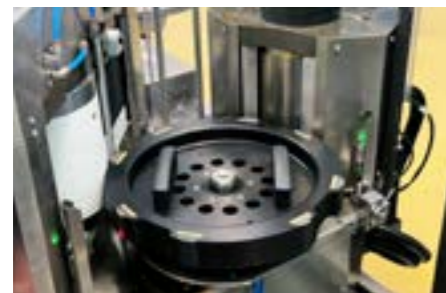
EASY OPERATION

Ease of use, maintenance and changeover to reduce production downtime



PRECISION AT EVERY STEP: YOUR COMPLETE LABELLING STATION

Designed for **GREAT ACCESSIBILITY**, the labelling station units are mounted on a **sliding structure** for easy, tool-less extraction, simplifying maintenance and providing operators with unparalleled access. Further enhancing its flexibility, the labelling unit offers precise 4-axis adjustment, manually or motorized via the HMI, to perfectly accommodate every bottle and label type.



VACUUM TRANSFER DRUM

Our labeller features a **high-precision transfer drum**, driven by a brushless servomotor, which **efficiently moves labels** from the cutting cylinder to the glue roller and then to the bottle, utilizing a stainless steel vacuum plate with optimized vacuum distribution for reduced energy consumption, and a low-weight design for quick changeovers, all while offering **easy cleaning** with its removable vacuum plate that retains adjustments.



TRACTION AND CUTTING ROLLER

Featuring a patented design, our **highly reliable and long-lasting cutting system (200 millions cuts)** ensures **excellent cutting quality and precision**. Its innovative **quick-replacement mechanism** requires no adjustments—just a single screw for the fixed blade, making it exceptionally user-friendly. The system utilizes an **extremely resistant sintered hard metal straight fixed blade**, designed for **extended durability without tooth wear** and completely **eliminating label stress**. The **servomotor-controlled cutting system**, include a **“Pull-Back” function** to prevent waste during idle times, and a convenient **label length self-learning function**.



REEL SUPPORT

This dual reel system is engineered with carbon or aluminium rollers, securely mounted on durable stainless steel plates. Independent servomotors enable precise, active control of the unwinding, ensuring optimal performance. For rapid changeovers, the **reel support, web aligner, mark reading photocell** are all conveniently adjustable on a single vertical platform.



FILM TENSIONER AND ALIGNER

Our roll-fed labeller features an advanced film handling system, with an **adjustable film tension** device offering active and electronically controlled tension reduction for a consistently smooth film flow. Engineered with carbon fibre rollers to eliminate static charges, removing the need for de-ionization, and an integrated web tracker that ensures accurate vertical film positioning, even when working with imperfectly wound reels.



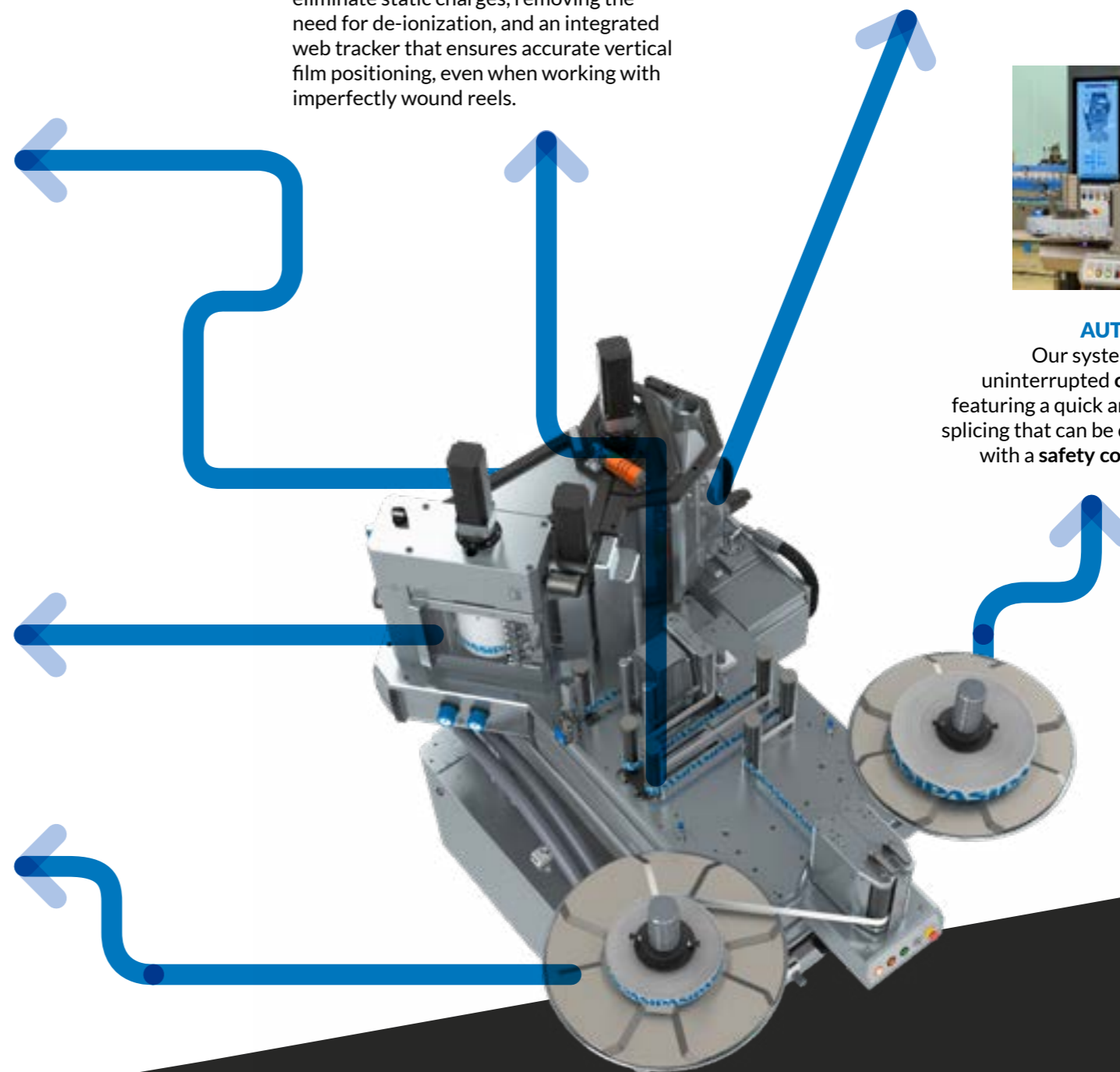
GLUE DISTRIBUTION STATION

Our labelling machines incorporate an **extremely precise glue dispensing system** designed for perfect, consistent glue distribution across each label while minimizing consumption and preventing issues like fumes or carbonization. The flexible dosing and scraping system allows meeting any specific customer requirements. The **external insulated glue tank** ensures an easy access for glue blocks feeding and cleaning without stopping the machine. The electrically heated pipe to feed the glue distributor contribute to have a quicker machine start-up.



AUTOMATIC REEL SPLICING

Our system guarantees **continuous, uninterrupted operation and production**, featuring a quick and easy tool-less setup for splicing that can be done with one hand, along with a **safety control** for the label support closure and no internal pitch sensor.





SMART LABELLING CARROUSEL FOR ADAPTIVE AND HIGH-PRECISION PRODUCTION

XLABL features a brushless motorized carousel with highly precise dynamics, eliminating the need for a synchronism encoder. The machine head height is automatically adjusted from the operator panel, allowing quick adaptation to different bottle sizes via recipe.

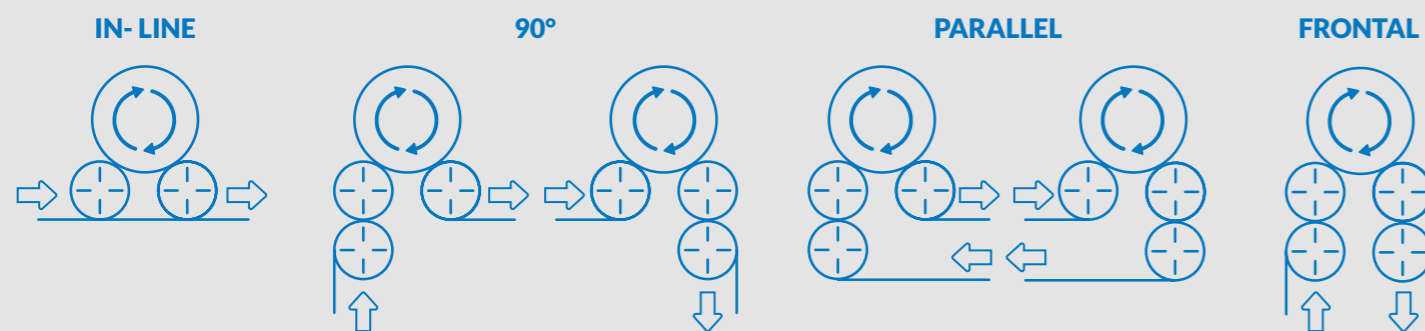
For precise vertical movement, the **cap pressing heads** boast a triple-stem mechanical stroke compensation system. A pneumatic compensation system is also available upon request for fine adjustment of top load pressure, ideal for lightweight bottles. To handle empty bottle labelling, the heads can optionally pressurize bottles with pre-filtered air. For enhanced versatility and to prevent contamination, two independent air manifolds are offered to manage both pneumatic compensation and empty bottle pressurization, accommodating various container types and weights.

Self-centring **bottle-holding plates** are equipped with a quick-release system. Their friction-improving coated and shaped surface prevents container slippage and ensures consistent rotation during label picking and smoothing operation, or in case of image capture and orientation processes. Plate rotation for cylindrical containers is transmitted by a silent and robust POLY-V motorized belt, while shaped or other container types utilize a mechanical lobe cam or brushless motor cam for precise rotation.

ADVANCED BOTTLE HANDLING FOR FLEXIBLE AND EFFICIENT LABELLING LINES

Designed to ensure seamless bottle flow, our labellers integrate an **efficient and customized infeed and outfeed conveying system**, complete with a motorized infeed screw that offers precise engagement/disengagement profile adjustments and can be configured as single, double opposite or overlapped to perfectly match diverse bottle types.

We provide examples of clockwise infeed and outfeed configurations below, with the flexibility to offer these same layouts in a counter-clockwise orientation to adapt to any plant's requirements, for easy integration into new or existing lines.



SIPA

sipasolutions.com

SIPA S.p.A. - Via Caduti del Lavoro, 3
31029 Vittorio Veneto (TV) Italy
Tel. +39 0438 911511